

Datasheet Drum Magnet Separator

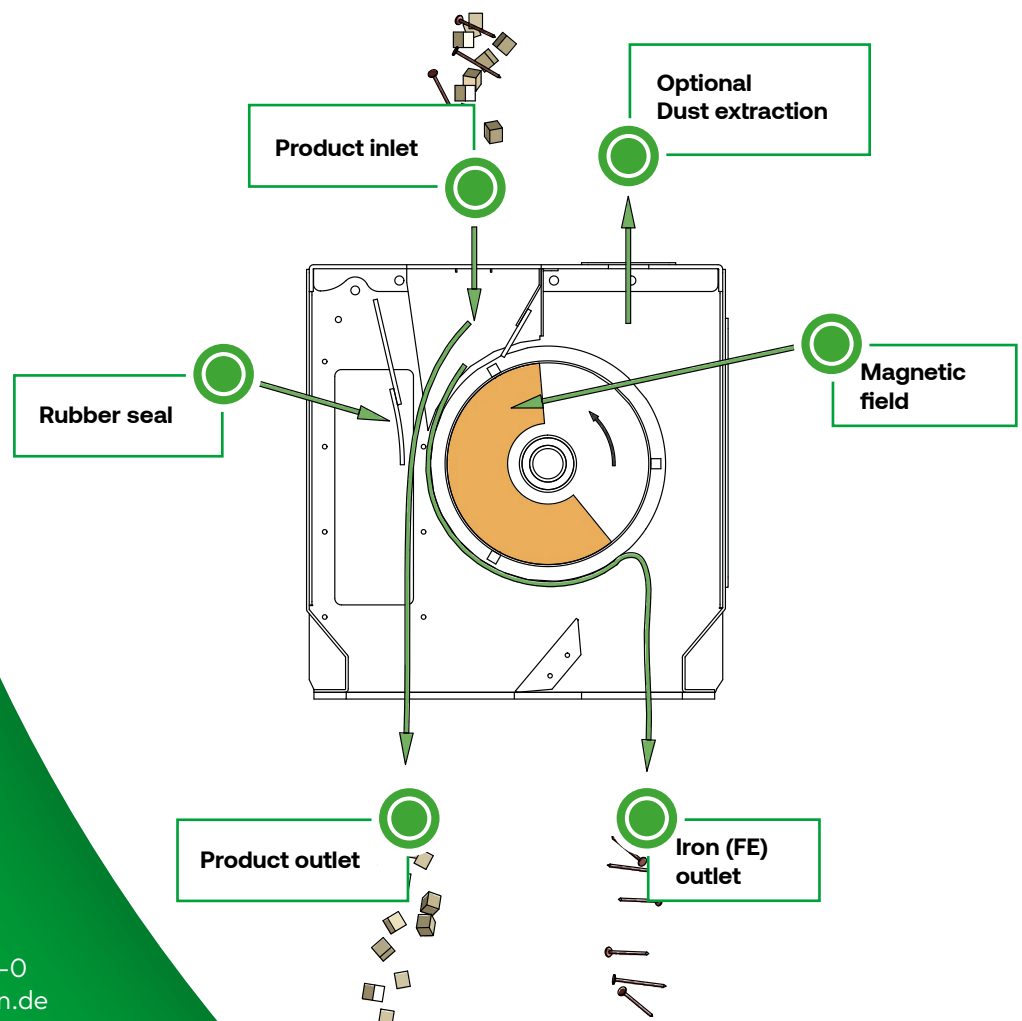
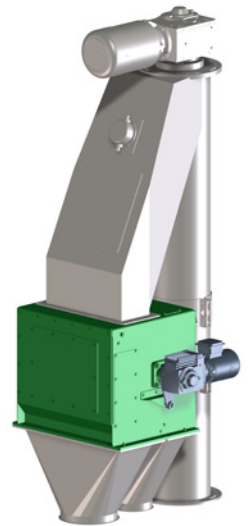
Type MA 35
Type MA 45
Type MA 65

STEINER®
Spiralförderanlagen

Contaminations in the conveyed material are often problematic and can cause disruptions, possibly even damage, to the system. For this, we offer systems in a closed system with a compact integrated magnetic separator. The arrangement is flexible, as they are individually planned based on customer preferences.

Drum magnet:

The smallest ferromagnetic materials are reliably sorted out even at high conveying capacities. The separated material lands separately in an integrated collecting box. This system is ideal for pallet shredding and similar applications. It can also be retrofitted into existing systems. The system is designed for various materials such as sawdust, wood chips, recycling material, or shredded material, ...



Steiner GmbH & Co KG

Rudolf-Diesel-Straße 23
D-84375 Kirchdorf am Inn
Phone: +49 (0) 8571/98349-0
eMail: info@steiner-spiralen.de

www.steiner-spiralen.de

Datasheet Drum Magnet Separator

Type MA 35
Type MA 45
Type MA 65



Technical data and operating instructions:

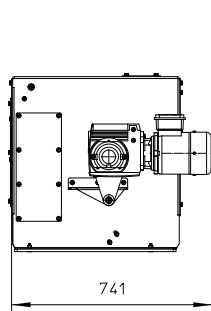
Especially suitable for: Sawdust, wood chips, recycling material, shredded material

Material flows: up to 60 m³/h

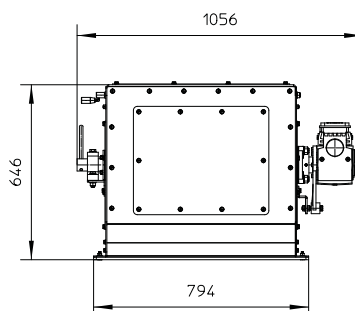
Maximum particle size: Chip size 0.5 – 80 mm

(Special versions possible)

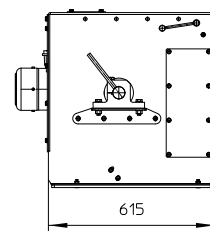
Type	Motor variants	Conveying capacity
MA 35	0,37 kw - 400 V	Up to a maximum of 35 m ³ /h
MA 45	055 kw - 400 V	Up to a maximum of 40 m ³ /h
MA 65	055 kw - 400 V	Up to a maximum of 60 m ³ /h



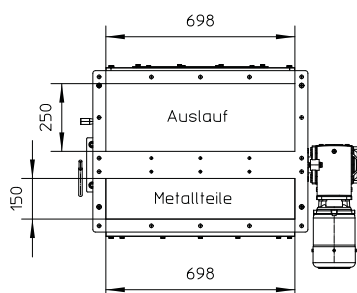
Right side view 1



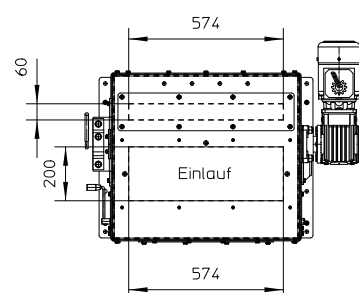
Front view 1



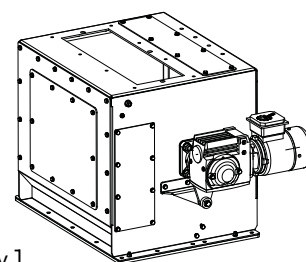
Left side view 1



Bottom view 1



Top view 1



General view 1

Steiner GmbH & Co KG

Rudolf-Diesel-Straße 23
D-84375 Kirchdorf am Inn
Phone: +49 (0) 8571/98349-0
eMail: info@steiner-spiralen.de

www.steiner-spiralen.de