

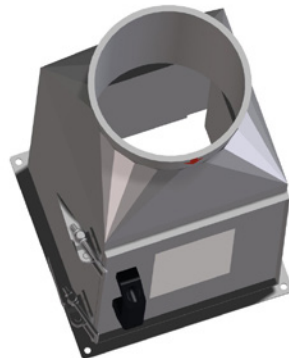
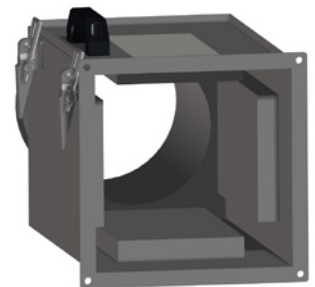
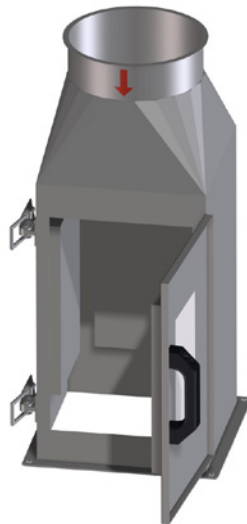
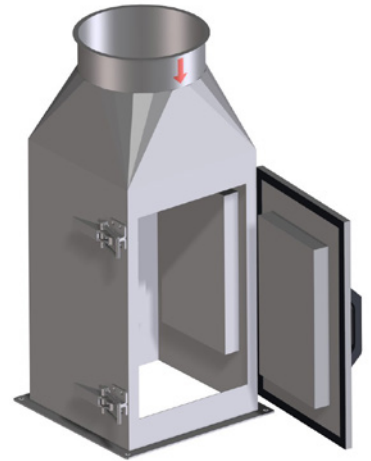
Datasheet Tube Magnet Separator



Tube magnets are equipped with 4 magnets. The magnets filter out metal impurities from the product stream and hold them in place until manually cleaned. This type of magnet is a relatively cost-effective solution. It should be noted that the tube magnet is only suitable for small quantities of ferromagnetic particles.

Cleaning of tube magnet:

Cleaning is done manually (requires interruption of the product flow). Cleaning intervals are to be determined independently.



Steiner GmbH & Co KG

Rudolf-Diesel-Straße 23
D-84375 Kirchdorf am Inn
Phone: +49 (0) 8571/98349-0
eMail: info@steiner-spiralen.de

www.steiner-spiralen.de



Datasheet Tube Magnet Separator

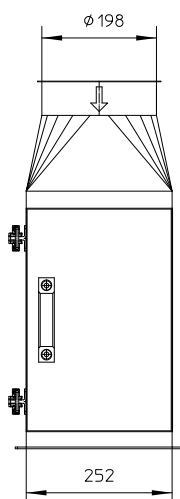
STEINER®
Spiralförderanlagen

Technical data and operating instructions:

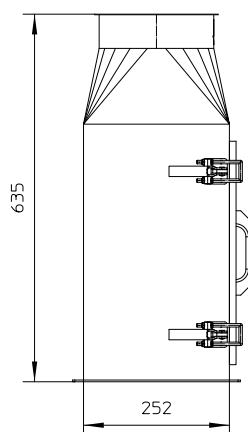
Especially suitable for: Shredded material, wood waste

Material flows: up to 4 m³/h

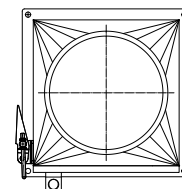
Maximum particle size: Length max. 45 mm (P16S)



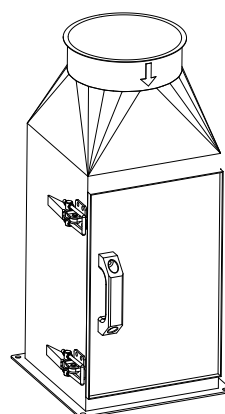
Front view 1



Left side view 1



Top view 1



General view 1



Steiner GmbH & Co KG

Rudolf-Diesel-Straße 23

D-84375 Kirchdorf am Inn

Phone: +49 (0) 8571/98349-0

eMail: info@steiner-spiralen.de

www.steiner-spiralen.de